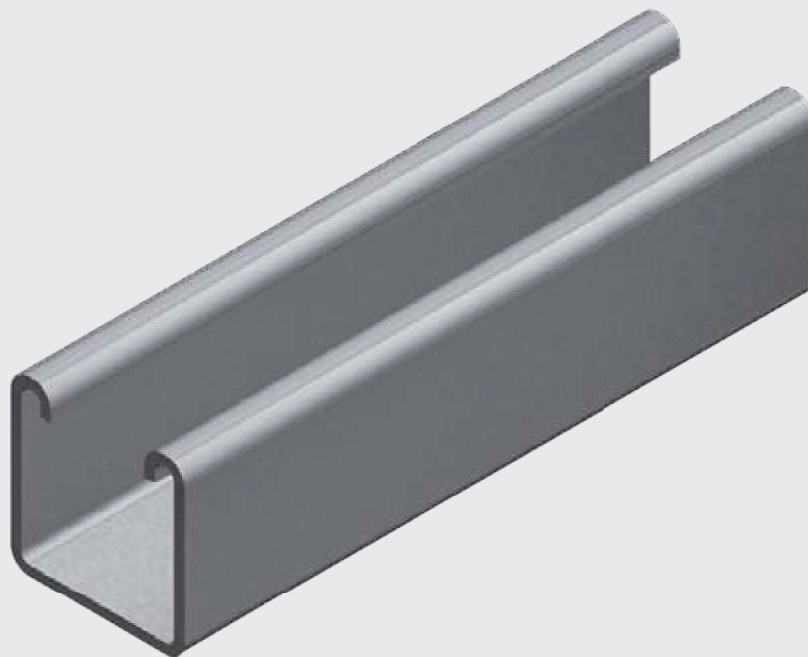
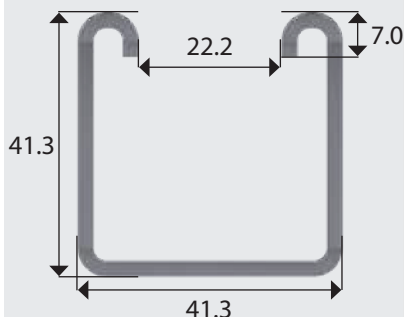


E1000 CHANNEL

Wt: 2.65kg/mtr (Steel)



PRODUCT DETAILS

EzyStrut E1000 Channel section is manufactured from strip steel to the following standards:

- Mild steel & Hot Dip Galvanised to AS/NZS1365, AS1594, AS/NZS4680, ISO1461
- Pre-Galvanised to AS1397
- Stainless Steel to AS1449, AS2837

MATERIAL SPECIFICATION

Thickness 2.5mm
Length 6m

ORDERING DETAILS

Supplied in standard 6m lengths

AVAILABLE FINISH	ORDERING CODE
Mill (Plain)	E1000M
Pre-Galvanised	E1000G
Hot Dip Galvanised	E1000H
Stainless Steel	E1000S

Fibre Reinforced Plastic (FRP) (see page 9.1 for details) E1000FRP

TECHNICAL DETAILS

The load values shown are in accordance with AS/NZS4600: 1996, using a minimum yield stress for F_y of 210 MPa on plain channels.

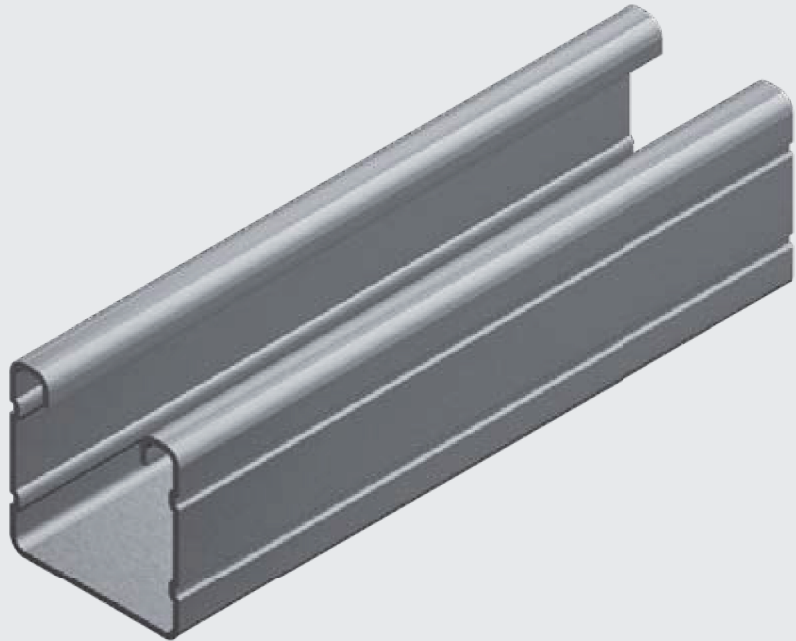
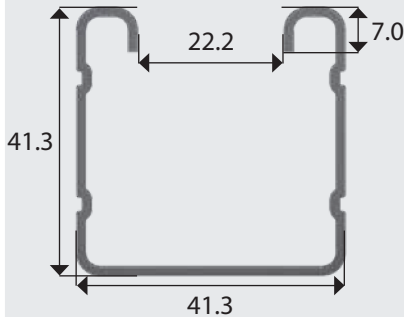
The published results are based on a uniformly loaded, simply supported span.

Deflection has been calculated using standard formulae at the maximum permissible stress.

Span (mm)	Max. Allowable Load (kg)	Deflection at Allowable Load (mm)
250	1308	0.17
500	654	0.68
750	436	1.53
1000	328	2.72
1250	261	4.25
1500	218	6.13
1750	187	8.34
2000	163	10.90
2250	145	13.80
2500	131	17.03
2750	119	20.61
3000	109	24.56

E2000 RIBBED CHANNEL

Wt: 1.78kg/mtr (Steel)
Wt: 0.61kg/mtr (Aluminium)



PRODUCT DETAILS

EzyStrut E2000 Channel section is manufactured from strip steel to the following standards:

- Mild steel & Hot Dip Galvanised to AS/NZS1365, AS1594, AS/NZS4680, ISO1461
- Pre-Galvanised to AS1397
- or from extruded aluminium alloy 6005A-T5 to AS1866:1997

MATERIAL SPECIFICATION

Thickness 1.6mm
Length 6m

ORDERING DETAILS

Supplied in standard 6m lengths

AVAILABLE FINISH

Mill (Plain)
Pre-Galvanised
Hot Dip Galvanised
Aluminium

ORDERING CODE

E2000M
E2000G
E2000H
E2000A

TECHNICAL DETAILS

The load values shown are in accordance with AS/NZS4600:1996, using a minimum yield stress for Fy of 210 MPa on plain channels.

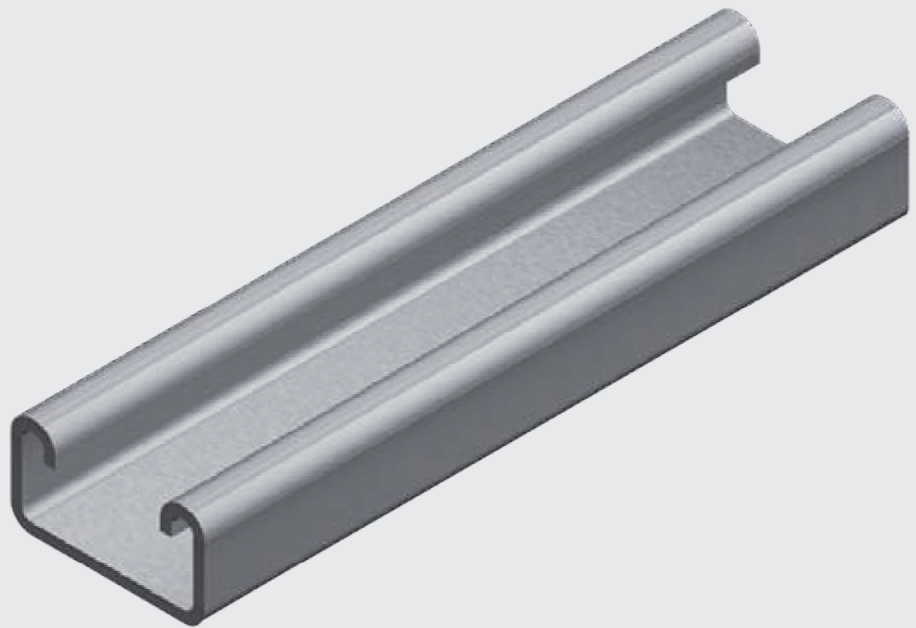
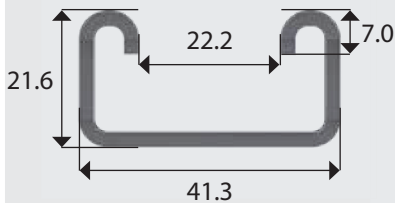
The published results are based on a uniformly loaded, simply supported span.

Deflection has been calculated using standard formulae at the maximum permissible stress.

Span (mm)	Max. Allowable Load (kg)	Deflection at Allowable Load (mm)
250	945	0.16
500	471	0.65
750	314	1.46
1000	236	2.59
1250	189	4.05
1500	157	5.84
1750	135	7.94
2000	117	10.37
2250	105	13.80
2500	94	16.20
2750	85	19.62
3000	78	23.34

E3300 CHANNEL

Wt: 1.88kg/mtr (Steel)



PRODUCT DETAILS

EzyStrut E3300 Channel section is manufactured from strip steel to the following standards:

- Mild steel & Hot Dip Galvanised to AS/NZS1365, AS1594, AS/NZS4680, ISO1461
- Pre-Galvanised to AS1397
- Stainless Steel to AS1449, AS2837

MATERIAL SPECIFICATION

Thickness 2.5mm
Length 6m

ORDERING DETAILS

Supplied in standard 6m lengths

AVAILABLE FINISH

Mill (Plain)
Pre-Galvanised
Hot Dip Galvanised
Stainless Steel

ORDERING CODE

E3300M
E3300G
E3300H
E3300S

TECHNICAL DETAILS

The load values shown are in accordance with AS/NZS4600: 1996, using a minimum yield stress for F_y of 210 MPa on plain channels.

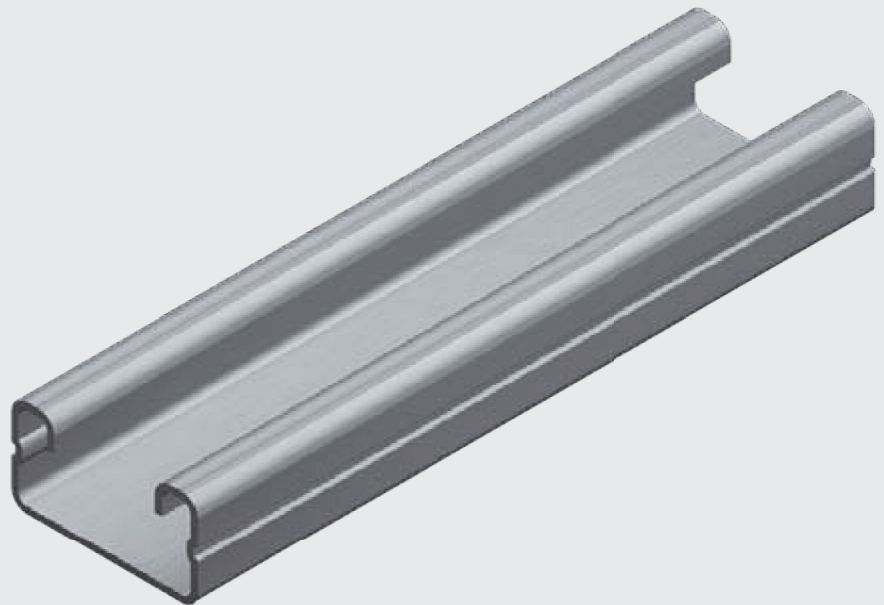
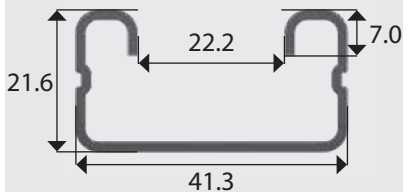
The published results are based on a uniformly loaded, simply supported span.

Deflection has been calculated using standard formulae at the maximum permissible stress.

Span (mm)	Max. Allowable Load (kg)	Deflection at Allowable Load (mm)
250	442	0.29
500	221	1.17
750	147	2.64
1000	110	4.69
1250	89	7.34
1500	73	10.57
1750	63	14.39
2000	55	18.79
2250	49	23.78
2500	44	29.35
2750	40	35.52
3000	37	42.27

E4000 RIBBED CHANNEL

Wt: 1.27kg/mtr (Steel)
Wt: 0.43kg/mtr (Aluminium)



PRODUCT DETAILS

EzyStrut E4000 Channel section is manufactured from strip steel to the following standards:

- Mild steel & Hot Dip Galvanised to AS/NZS1365, AS1594, AS/NZS4680, ISO1461
- Pre-Galvanised to AS1397
- or from extruded aluminium alloy 6005A-T5 to AS1866:1997

MATERIAL SPECIFICATION

Thickness 1.6mm
Length 6m

ORDERING DETAILS

Supplied in standard 6m lengths

AVAILABLE FINISH

Mill (Plain)
Pre-Galvanised
Hot Dip Galvanised
Aluminium

ORDERING CODE

E4000M
E4000G
E4000H
E4000A

TECHNICAL DETAILS

The load values shown are in accordance with AS/NZS4600:1996, using a minimum yield stress for F_y of 210 MPa on plain channels.

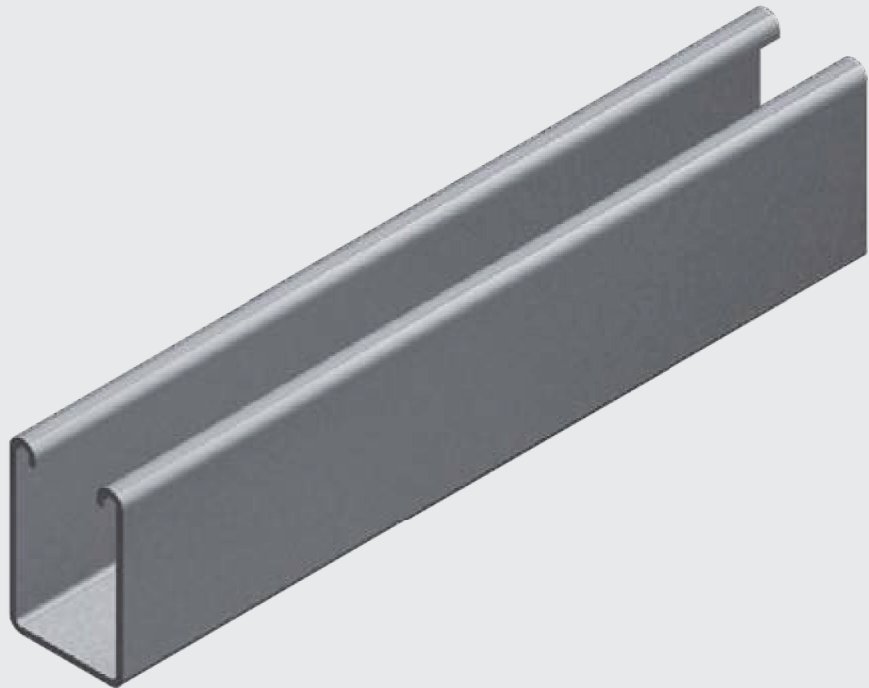
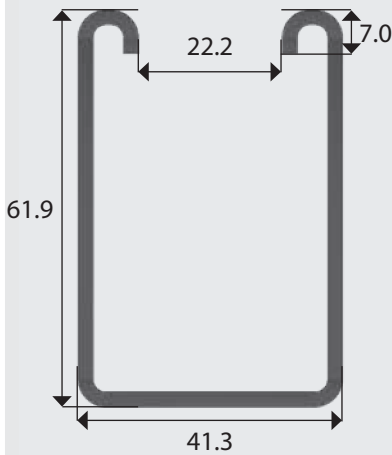
The published results are based on a uniformly loaded, simply supported span.

Deflection has been calculated using standard formulae at the maximum permissible stress.

Span (mm)	Max. Allowable Load (kg)	Deflection at Allowable Load (mm)
250	350	0.31
500	175	1.22
750	116	2.76
1000	88	4.89
1250	70	7.65
1500	58	11.02
1750	50	15.00
2000	44	19.59
2250	39	24.82
2500	35	30.61
2750	32	37.04
3000	30	44.15

E5500 CHANNEL

Wt: 3.43kg/mtr (Steel)



PRODUCT DETAILS

EzyStrut E5500 Channel section is manufactured from strip steel to the following standards:

- Mild steel & Hot Dip Galvanised to AS/NZS1365, AS1594, AS/NZS4680, ISO1461
- Pre-Galvanised to AS1397

MATERIAL SPECIFICATION

Thickness 2.5mm
Length 6m

ORDERING DETAILS

Supplied in standard 6m lengths

AVAILABLE FINISH	ORDERING CODE
Mill (Plain)	E5500M
Pre-Galvanised	E5500G
Hot Dip Galvanised	E5500H

TECHNICAL DETAILS

The load values shown are in accordance with AS/NZS4600: 1996, using a minimum yield stress for F_y of 210 MPa on plain channels.

The published results are based on a uniformly loaded, simply supported span.

Deflection has been calculated using standard formulae at the maximum permissible stress.

Span (mm)	Max. Allowable Load (kg)	Deflection at Allowable Load (mm)
250	2488	0.11
500	1244	0.45
750	830	1.02
1000	622	1.81
1250	498	2.82
1500	414	4.06
1750	355	5.54
2000	311	7.23
2250	276	9.16
2500	249	11.30
2750	226	13.68
3000	207	16.28

PRODUCT DETAILS

EzyStrut Slotted Channel sections are manufactured from strip steel to the following standards:

- Mild steel & Hot Dip Galvanised to AS/NZS1365, AS1594, AS/NZS4680, ISO1461
- Pre-Galvanised to AS1397
- Stainless Steel to AS1449, AS2837
- or from extruded aluminium alloy 6005A-T5 to AS1866:1997

SLOTTING DETAILS

25 x 14mm slots are punched continuously at 38mm centres

MATERIAL SPECIFICATION

Length 6m

ORDERING DETAILS

Supplied in standard 6m lengths

AVAILABLE FINISH

Pre-Galvanised
Hot Dip Galvanised
Stainless Steel

Aluminium

ORDERING CODE

E...SG

E...SH

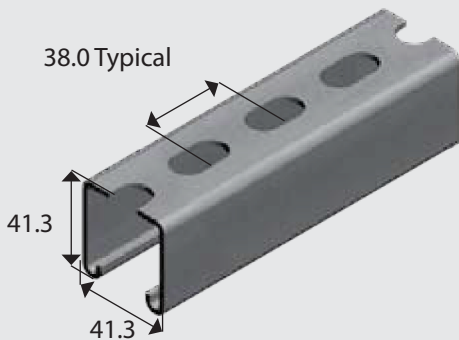
E...SS (E1000 and E3300 profiles only)

E...SA (E2000 and E4000 profiles only)

Example: To order E1000 Slotted in Hot Dip Galvanised, use product code: E1000SH

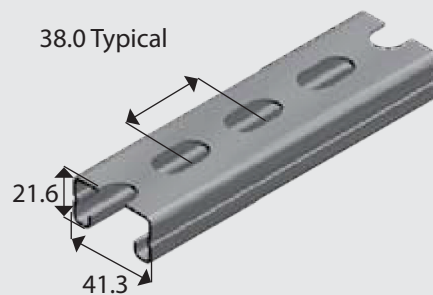
E1000S

Wt: 2.32kg/mtr (Steel)



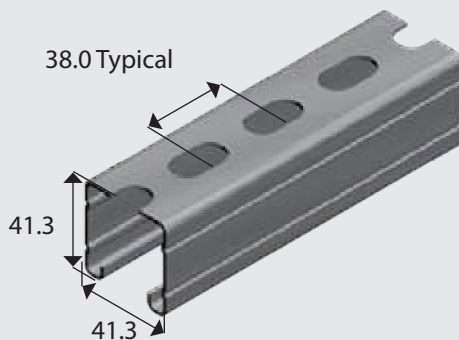
E4000S

Wt: 1.09kg/mtr (Steel)
Wt: 0.21kg/mtr (Aluminium)



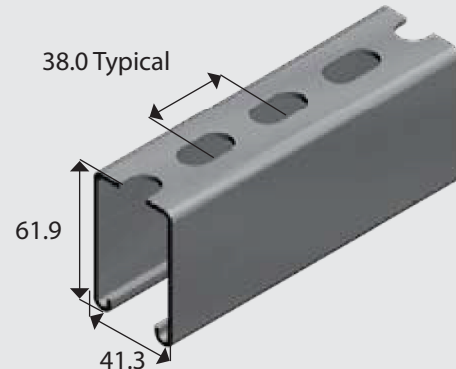
E2000S

Wt: 1.60kg/mtr (Steel)
Wt: 0.39kg/mtr (Aluminium)



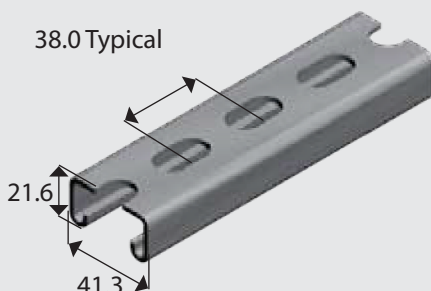
E5500S

Wt: 3.10kg/mtr (Steel)



E3300S

Wt: 1.54kg/mtr (Steel)



PRODUCT DETAILS

EzyStrut Combination Channel sections are manufactured from strip steel to the following standards:

- Mild steel & Hot Dip Galvanised to AS/NZS1365, AS1594, AS/NZS4680, ISO1461
- Pre-Galvanised to AS1397
- Stainless Steel to AS1449, AS2837
- or from extruded aluminium alloy 6005A-T5 to AS1866:1997

WELDING DETAILS

The channel is continuously spot welded at a maximum of 150 centres

MATERIAL SPECIFICATION

Length 6m

ORDERING DETAILS

Supplied in standard 6m lengths

AVAILABLE FINISH

Pre-Galvanised

Hot Dip Galvanised

Stainless Steel

Aluminium

ORDERING CODE

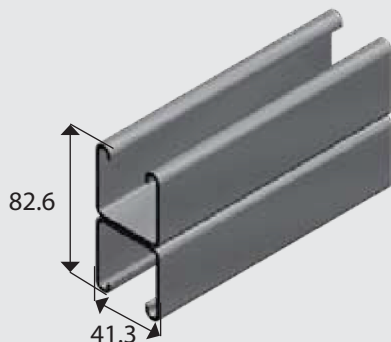
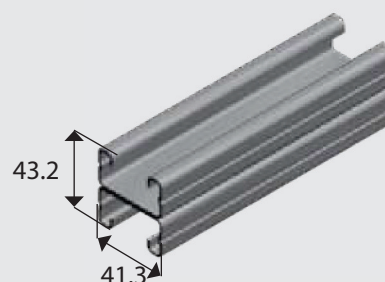
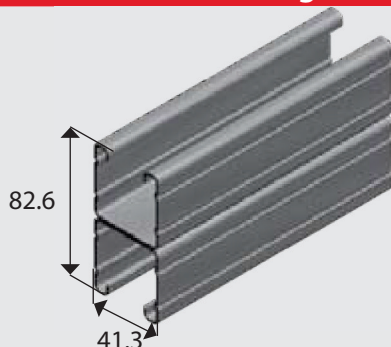
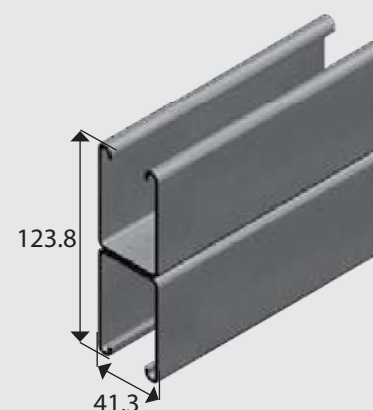
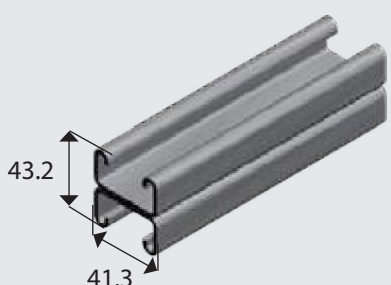
E...1G

E...1H

E...1S (E1000 and E3300 profiles only)

E...1A (E2000 and E4000 profiles only)

All Combination Channel other than E1001H is manufactured against firm orders only.

E1001**Wt: 5.30kg/mtr (Steel)****E4001****Wt: 2.54kg/mtr (Steel)
Wt: 0.86kg/mtr (Aluminium)****E2001****Wt: 3.56kg/mtr (Steel)
Wt: 1.22kg/mtr (Aluminium)****E5501****Wt: 6.86kg/mtr (Steel)****E3301****Wt: 3.76kg/mtr (Steel)**

PRODUCT DETAILS

EzyStrut Combination Channel sections are manufactured from strip steel to the following standards:

- Mild steel & Hot Dip Galvanised to AS/NZS1365, AS1594, AS/NZS4680, ISO1461
- Stainless Steel to AS1449, AS2837

WELDING DETAILS

The channel is continuously spot welded at a maximum of 150 centres

MATERIAL SPECIFICATION

Length 6m

ORDERING DETAILS

Supplied in standard 6m lengths

AVAILABLE FINISH

Hot Dip Galvanised
Stainless Steel

ORDERING CODE

E...1...H

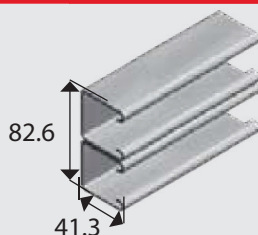
E...1...S (E1000 and E3300 profiles only)

Most channel combinations can also be manufactured from other strut profiles. To order simply change the digits to represent the strut profile.

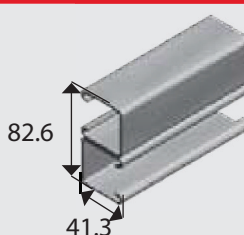
Example: To use E2000 channel, the product code would be E2001-xx

All Combination Channel other than E1001H is manufactured against firm orders only.

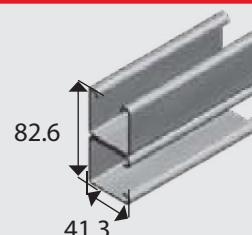
E1001-A Wt: 5.30kg/mtr



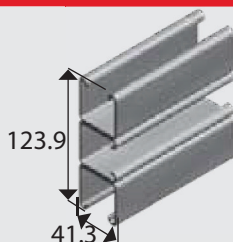
E1001-B Wt: 5.30kg/mtr



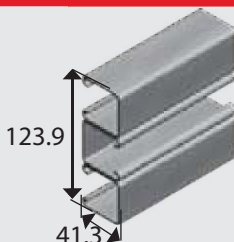
E1001-C Wt: 5.30kg/mtr



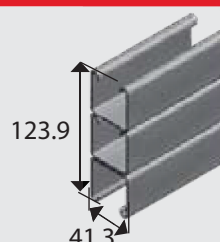
E1001-A3 Wt: 7.95kg/mtr



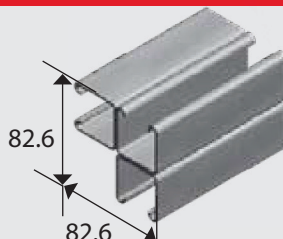
E1001-B3 Wt: 7.95kg/mtr



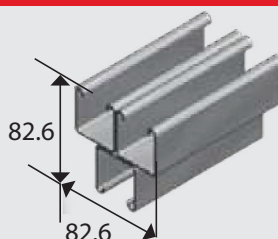
E1001-3 Wt: 7.95kg/mtr



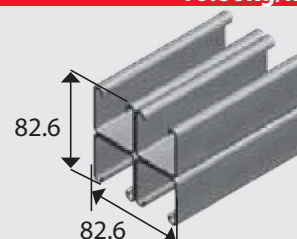
E1001-C3 Wt: 7.95kg/mtr



E1001-D3 Wt: 7.95kg/mtr



E1001-C41 Wt: 10.60kg/mtr



PRODUCT DETAILS

EzyStrut Concrete Insert Channel is manufactured from strip steel to the following standards:

- Mild steel & Hot Dip Galvanised to AS/NZS1365, AS1594, AS/NZS4680, ISO1461

Lugs are punched continuously along the channel length at 200mm centres.

LOADING DETAILS

E1000CI Testing on 200mm section confirms a maximum pullout load of 1030kg with a safety factor of 3.

E3300CI Testing on 200mm section confirms a maximum pullout load of 600kg with a safety factor of 3.

NOTES

- The tests were carried out in controlled laboratory conditions using a concrete strength of 25MPa (average).
- The rated load performance will change when using other concrete strengths and depending on positioning of the concrete reinforcing mesh.

ORDERING DETAILS

Supplied in standard 6m lengths

Channel can be supplied pre cut in increments of 200mm (nominal).

Cutting charges and minimum order quantities may apply.

AVAILABLE FINISH

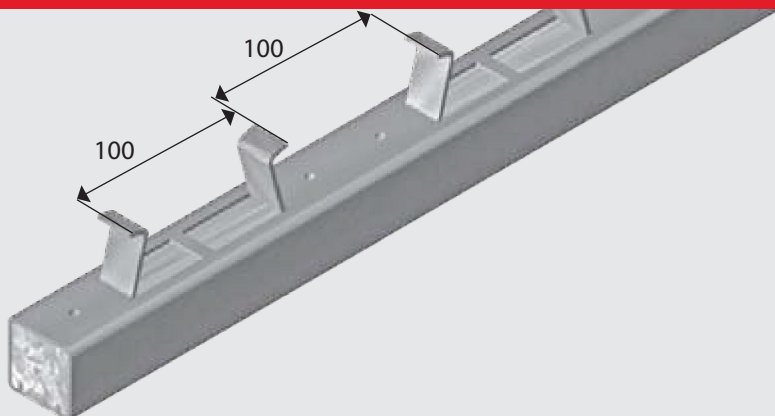
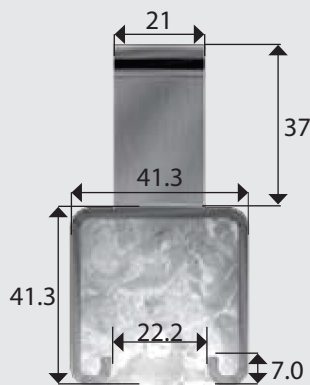
Hot Dip Galvanised

ORDERING CODE

E...CIH

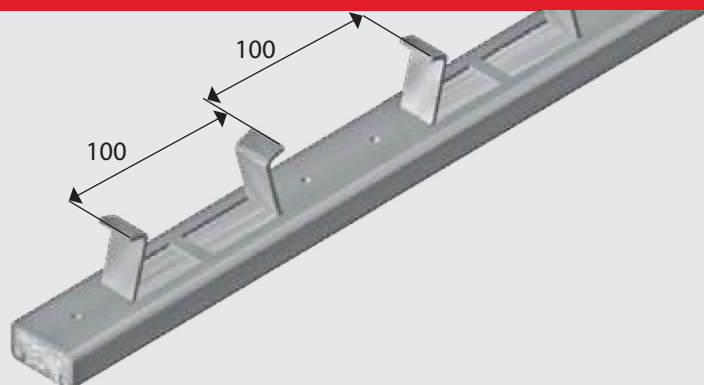
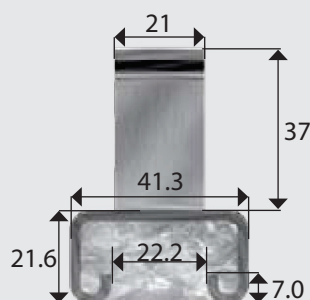
E1000CI

Wt: 2.86kg/mtr



E3300CI

Wt: 2.00kg/mtr



PRODUCT DETAILS

EzyStrut provides a range of plastic accessories to complement most channel sections.

Commonly used in lighting grid applications, channels are easily transformed into cable conduits using the channel cover strip and range of end caps.

ORDERING DETAILS

Supplied individually

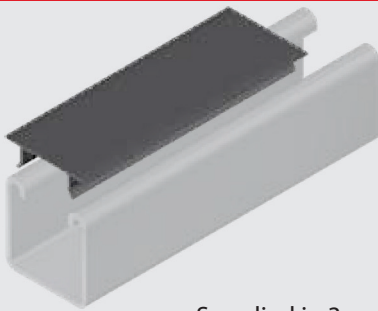
AVAILABLE FINISH

White/Grey Plastic
Aluminium

ORDERING CODE

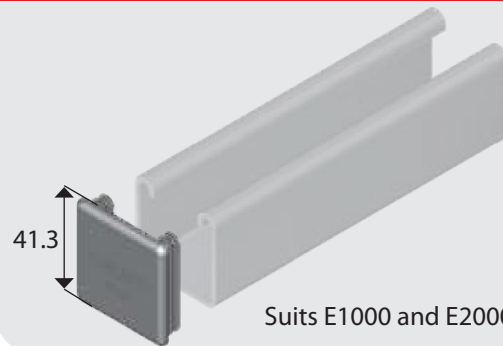
E...P
E...A (E1184 Only)

E1184



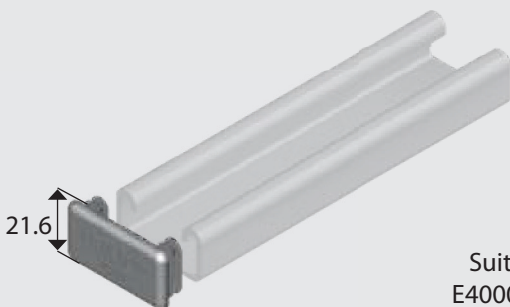
Supplied in 3 metre lengths

E1180



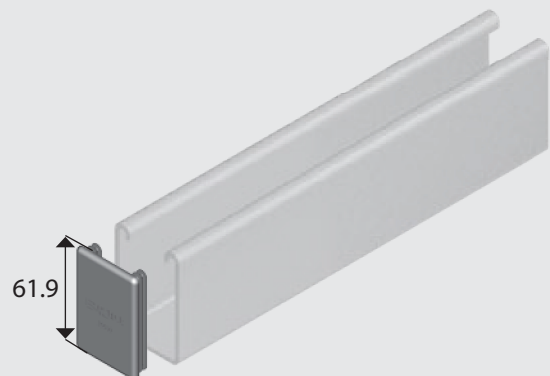
Suits E1000 and E2000 Channels

E3380



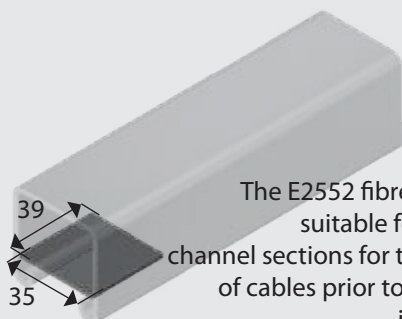
Suits E3300 &
E4000 Channel

E5580



Suits E5500 Channel

E2552



The E2552 fibre retainer is suitable for use in all channel sections for the support of cables prior to cover strip installation.